

AWS Activity Report 2021

■ Suntory Products Limited Okudaisen Bunanomori Water Plant

Address: 1177 Kasarabara Aza Mitsukue, Oaza, Kofu-cho, Hino-gun,
Tottori 689-4424, Japan

Business activities: Water, flavour drink manufacturing

Certificate acquired: Since 2018

Certification level: Core



Commitment to Water Stewardship (AWS Standards: 2.1)

As a Plant Manager of Suntory Okudaisen Bunanomori Water Plant,

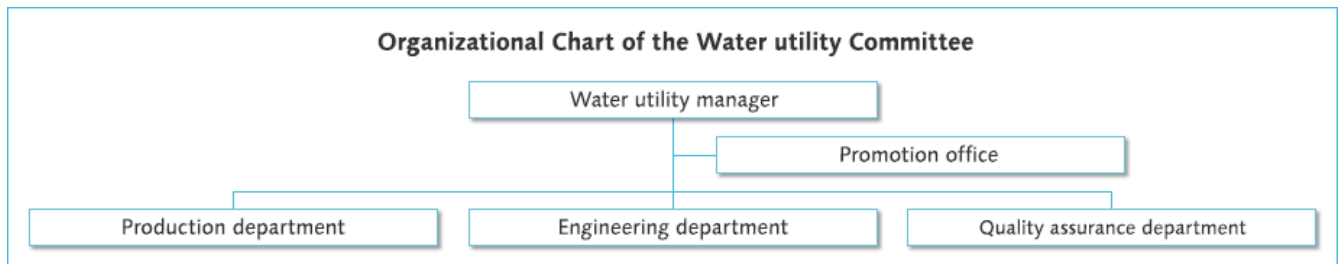
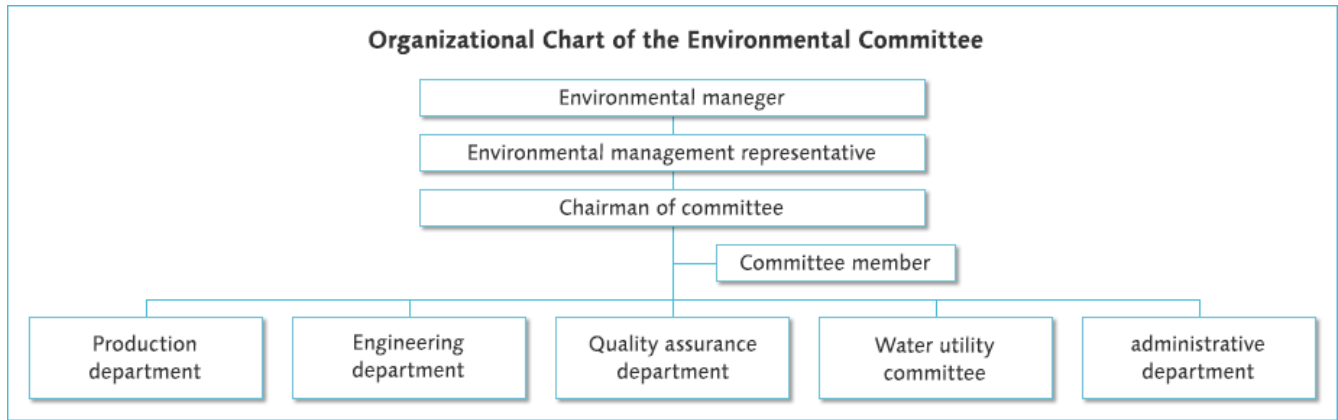
- I commit to supporting the site's pursuit of responsible water stewardship.
- I will support the site's efforts to achieve the outcomes of water stewardship, namely good water governance, good water balance, good water quality and healthy Important Water-Related Areas.
- I will respect the right of workers on-site to have access to safe water, adequate sanitation and hygiene.
- I commit that the site will attempt to engage stakeholders throughout its efforts in an open and transparent manner and that the site will comply with all legal and regulatory requirements as well as respect legal and water-related rights and relevant water-related national and international treaties.
- I will coordinate with and support public-sector agencies in their efforts to encourage water-related planning and implement water-related policies.
- I will support the site's efforts to continually improve and adapt its water stewardship actions and plans and ensure that there is sufficient organizational capacity to successfully implement the AWS Standard.
- I commit to disclosing material water-related information to all relevant audiences in an appropriate format.

April 1, 2020

Plant Manager, Suntory Okudaisen Bunanomori Water Plant

Makoto Tominaga

Internal Governance (AWS Standard: 5.1)



Summary of the Water Stewardship Performance (AWS Standards: 5.3)

Purpose (AWS standards 2.3)	Performance target (AWS standards 2.3)	Activities/Performance of 2021
<p>Disclose information related to water in production activities and identify issues in the catchment. Treat as issues to be addressed as necessary (status of water use and waste water, disclosure of information on activities related to water, identification of status in the catchment)</p>	<ol style="list-style-type: none"> 1. Disclose information about activities related to water such as the amount of water used and status of waste water to be accountable. 2. Communicate with government agencies, experts, and local residents and gather diverse opinion about information disclosure and identify issues shared across the catchment. 3. Gather information about the catchment outside our sites and determine if there are risks or not. Determine effects all times. 	<ol style="list-style-type: none"> 1. Disclosure of environmental indices through the CSR Report 2. Holding Kasarabara Monitoring Committee 3. Acquire information about wells from government agencies in the catchment
<p>Maintain and improve the groundwater recharge function of the important water related area "Natural Water Sanctuary Okudaisen"</p>	<p>Recovery and protection of soil with high permeability through forest maintenance</p> <ol style="list-style-type: none"> 1. Create broad-leaved forest area that is 	<ol style="list-style-type: none"> 1. Create broad-leaved forest area that is renewable <ol style="list-style-type: none"> A) Area of bamboo grass cleared: Approx. 1ha

	<p>renewable</p> <p>2. Recover understory vegetation in artificial Japanese cypress forest</p>	<p>2. Recover understory vegetation in artificial Japanese cypress forest</p> <p>A) Area thinned and trimmings removed: Approx. 2ha</p> <p>B) Roadways for thinning and removing trimming with low environmental impact: 218m</p>
<p>Maintain and improve biodiversity of Natural Water Sanctuary Okudaisen, an important water related area for water resources</p>	<p>Reduce water consumption rate (m3/kl) by 35% less than the rate in 2015 by 2030 (Group-wide target)</p>	<p>Reduced water consumption rate by approximately 7% less than the rate in 2020 Moving forward, we will continue to reduce water consumption based on our water conservation roadmap aimed at our 2030 target.</p>
<p>Waste Water Management</p>	<p>Continue compliance with the values agreed to in the Kasarabara Industrial Park Environmental Preservation Agreement</p>	<p>Continued compliance with waste water standards through appropriate operation and management</p>
<p>Provide safe water supply and carry out stable operation of sanitation facilities</p>	<p>Constant supply of clean water on site and constant availability of restroom facilities for use</p>	<ol style="list-style-type: none"> 1. Constantly monitored chlorine concentration in water supply 2. Water quality assessment by outside contractors 3. Holding of spare parts for pumps minimizes downtime during failures 4. No failures due to septic tank inspections in accordance with laws and regulations and the above activities

Collaborative efforts to address shared challenges related to water (AWS standards 5.4)

Shared challenges related to water	Related efforts	Actions to address the issue	Stakeholder engagement	Disclosure methods
Depletion of groundwater and freshwater resources	<ul style="list-style-type: none"> • Limitation of water pumping through agreements • Monitoring by the Kasarabara Environmental Monitoring Committee 	<ul style="list-style-type: none"> • Compliance with pumping limits • Establish voluntary standards 	<ul style="list-style-type: none"> • Provide information to the committee 	<ul style="list-style-type: none"> • Through reports provided to the committee • Suntory site report
Wastewater-based water pollution of Hosotanigawa River	<ul style="list-style-type: none"> • Regulation of waste water quality (pH, BOD, SS, coliform group) through agreements • Monitoring is conducted through the Kasarabara Environmental Monitoring Committee 	<ul style="list-style-type: none"> • Maintain water quality of the Hosotanigawa River 	<ul style="list-style-type: none"> • Provide information to the committee 	<ul style="list-style-type: none"> • Through reports provided to the committee • Suntory site report