

AWS Activity Report 2021



■ Minami Alps Hakushu Water Plant, Suntory Products Limited

Address: 2913-1 Torihara, Hakushu-cho, Hokuto-shi, Yamanashi
408-0316, Japan

Business activities: Bottled natural mineral water manufacturing

Certificate acquired: Since 2021

Certification level: Core



Commitment to Water Stewardship (AWS Standards: 2.1)

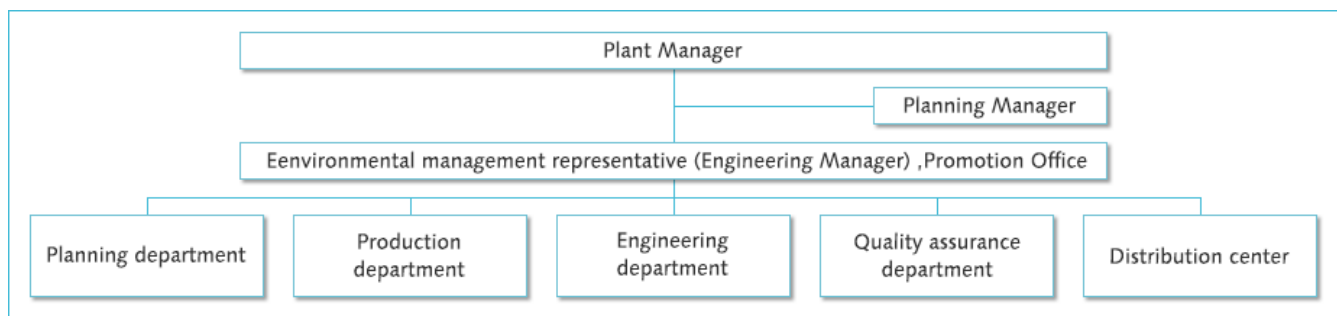
As the Plant Manager of Suntory Minami Alps Hakushu Water Plant,

- I commit to supporting the site's pursuit of responsible water stewardship.
- I will support the site's efforts to achieve the outcomes of water stewardship, namely good water governance, good water balance, good water quality and healthy Important Water-Related Areas.
- I will respect the right of workers on-site to have access to safe water, adequate sanitation and hygiene.
- I commit that the site will attempt to engage stakeholders throughout its efforts in an open and transparent manner and that the site will comply with all legal and regulatory requirements as well as respect legal and water-related rights and relevant water-related national and international treaties.
- I will coordinate with and support public-sector agencies in their efforts to encourage water-related planning and implement water-related policies.
- I will support the site's efforts to continually improve and adapt its water stewardship actions and plans and ensure that there is sufficient organizational capacity to successfully implement the AWS Standard.
- I commit to disclosing material water-related information to all relevant audiences in an appropriate format.

October 1, 2021

Plant Manager, The Minami Alps Hakushu Water Plant of Suntory Products Ltd.
Shigeo Masuda

Internal Governance (AWS Standards: 5.1)



Summary of the Water Stewardship Performance(AWS Standards: 5.3)

Purpose (AWS standards 2.3)	Performance target (AWS standards 2.3)	Activities/Performance of 2021
Maintain and improve the groundwater recharge function of the important water related area, "Natural Water Sanctuary Minami Alps"	<p>Restoration of forest vegetation to create a healthy soil environment with high permeability</p> <ol style="list-style-type: none"> Greening of collapsed granite area (approx. 0.6 ha) to stabilize the soil <ol style="list-style-type: none"> Tree establishment rate of 20% after 30 years of planting (*1) <p>*1 Planting performed in 2016</p> <ol style="list-style-type: none"> The growth rate (*2) of planted trees shall be maintained at a positive rate <p>*2. 2018 as the base year</p> Vegetation recovery in the area where Hokuginodaira protective fence is installed (approx. 1 ha) <ol style="list-style-type: none"> Soil is covered and protected from soaking by the subsoil vegetation 	<p>Restoration of forest vegetation to create a healthy soil environment with high permeability</p> <ol style="list-style-type: none"> Greening of collapsed granite area (approx. 0.6 ha) to stabilize the soil <ol style="list-style-type: none"> Planting establishment rate 2020: 81.1%, 2021: 77.8% <ol style="list-style-type: none"> Growth rate of planted trees 2019: 1.1%, 2021: 77.9 Vegetation recovery in the area where Hokuginodaira protective fence is installed (approx. 1 ha) <p>Soil coverage of understory vegetation (at 30 cm height): 100% (coverage outside the protection fence is 0%)</p>
Protect and improve biodiversity in Natural Water Sanctuary Minami Alps, an important water related area	Maintain nesting and breeding habitat for raptors at the top of the ecosystem pyramid (confirm whether mountain hawk-eagles are nesting)	Confirmation of nesting of mountain hawk-eagles in the upper reaches of the Jingu River
Water Saving	Reduce water consumption rate (m3/kl) by 35% less than the rate in 2015 by 2030 (Group-wide target)	Continued steady water conservation activities and reduced water consumption rate 4.1% lower than in 2015
Waste water management	Maintain the water quality of the downstream section of the river by continuously meeting the standard values of the Water Pollution Prevention Law and the Yamanashi Prefecture Ordinance on Conservation of Living Environment	Did not exceed standard values

Collaborative efforts to address shared challenges related to water (AWS standards 5.4)

Shared challenges related to water	Related efforts	Actions to address the issue	Stakeholder engagement	Disclosure methods
Depletion of groundwater and freshwater resources	<ul style="list-style-type: none"> Monitoring of used water volume and groundwater levels 	<ul style="list-style-type: none"> Management of pumped water volume 	<ul style="list-style-type: none"> Provision of information to local government (Yamanashi Prefecture and Hokuto City) 	<ul style="list-style-type: none"> Yamanashi Prefecture Website (https://www.pref.yamanashi.jp/taiki-sui/sokutei.html) Suntory site report
Wastewater-based water pollution of watershed	<ul style="list-style-type: none"> Constant monitoring of water quality by Yamanashi Prefecture Constant monitoring of water quality by Shizuoka Prefecture 	<ul style="list-style-type: none"> Maintain water quality of the Jingu River 	<ul style="list-style-type: none"> Cooperation with local government 	<ul style="list-style-type: none"> Results of Water Quality Measurements of Public Water Bodies and Groundwater in Yamanashi Prefecture (constant monitoring) (https://www.pref.yamanashi.jp/taiki-sui/sokutei.html) Result of the water quality measurement on the water quality website of the Public Environment Section of Shizuoka Prefecture (http://www.pref.shizuoka.jp/kankyo/ka-050/untitled.html) Suntory site report