

AWS Activity Report 2022



Suntory Spirits Limited, Kyushu Kumamoto Plant

Address: 478 Hachimansui, Kitaamagi, Kashima-machi, Kamimashiki-gun, Kumamoto 861-3104, Japan

Business activities: Beverage (Beer, Soft drink, Water etc.) manufacturing

Certificate acquired: Since 2019

Certification level: Platinum



Commitment to Water Stewardship (AWS Standards: 2.1)

As the Plant Manager of Suntory Kyushu Kumamoto Plant,

- I commit to supporting the site's pursuit of responsible water stewardship.
- I will support the site's efforts to achieve the outcomes of water stewardship, namely good water governance, good water balance, good water quality and healthy Important Water-Related Areas.
- I will respect the right of workers on-site to have access to safe water, adequate sanitation and hygiene.
- I commit that the site will attempt to engage stakeholders throughout its efforts in an open and transparent manner and that the site will comply with all legal and regulatory requirements as well as respect legal and water-related rights and relevant water-related national and international treaties.
- I will coordinate with and support public-sector agencies in their efforts to encourage water-related planning and implement water-related policies.
- I will support the site's efforts to continually improve and adapt its water stewardship actions and plans and ensure that there is sufficient organizational capacity to successfully implement the AWS Standard.
- I commit to disclosing material water-related information to all relevant audiences in an appropriate format.

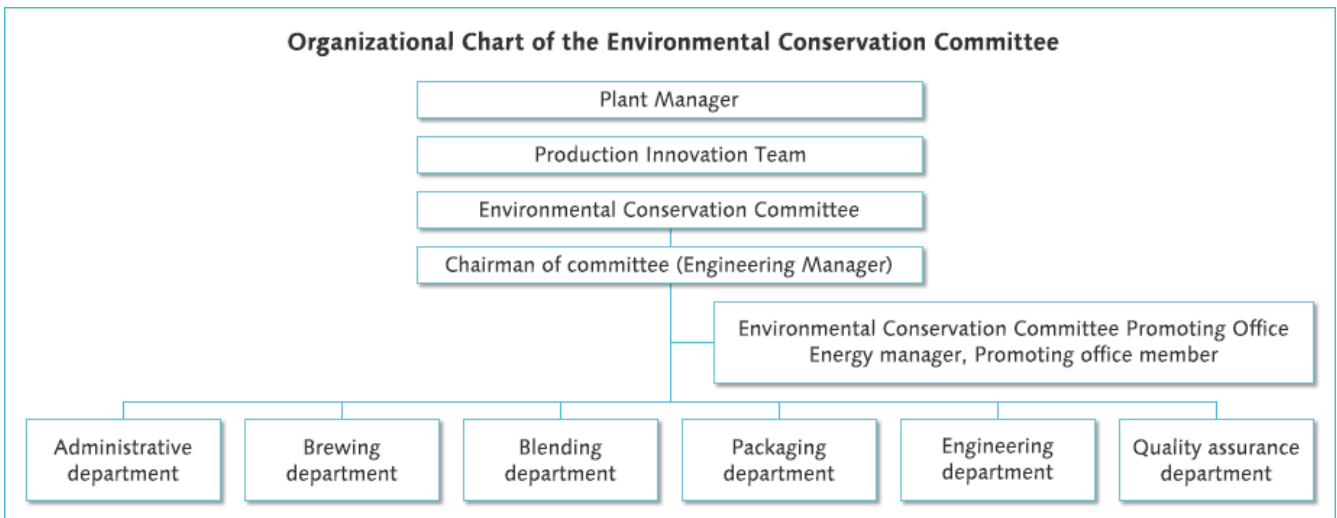
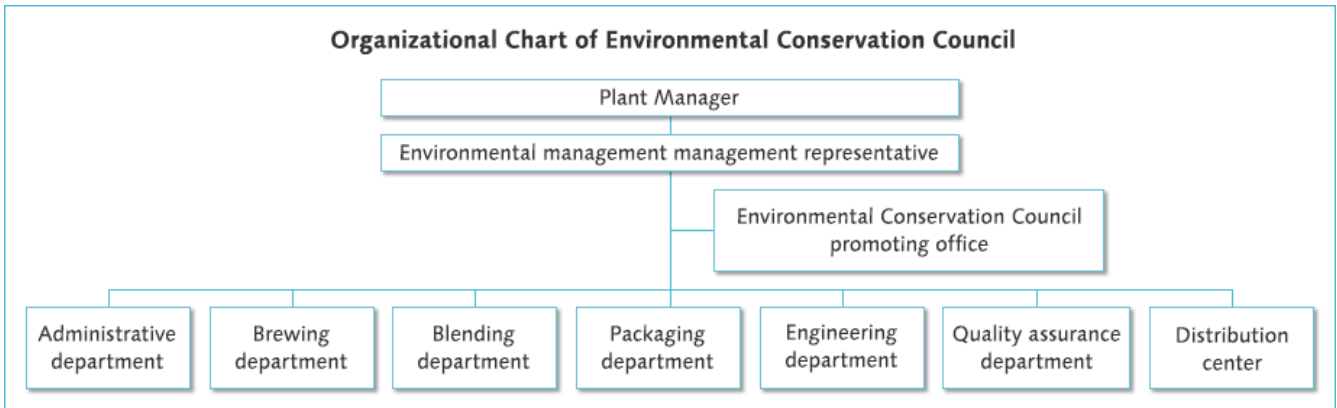
August 25, 2022

Plant Manager, Suntory Kyushu Kumamoto Plant

Shinichiro Sakoda

Shinichiro Sakoda

Internal Governance (AWS Standards: 5.1)



Summary of the Water Stewardship Performance(AWS Standards: 5.3)

Purpose (AWS standards 2.3)	Performance target (AWS standards 2.3)	Activities/Performance of 2022
Maintain and improve the groundwater recharge function of the important water related area "Natural Water Sanctuary Aso" and "Winter Rice Fields"	<ol style="list-style-type: none"> Restoration and protection of highly permeable soil through forest improvement (thinning) Promotion of groundwater recharge through winter rice field flooding 	<ol style="list-style-type: none"> Restoration and protection of highly permeable soil through forest improvement (thinning) <ol style="list-style-type: none"> Area of thinning for removal of trees from planted forest: 31.95ha Promotion of groundwater recharge through winter rice field flooding <ol style="list-style-type: none"> Area of groundwater recharge through winter rice field flooding/Amount of water used for flooding: 11.26 ha/1,320,000 tons Organic farming trial to improve groundwater quality: Total 0.47 ha
Protect and improve biodiversity in Natural Water Sanctuary, an important water related area	Creation of a habitat for raptors at the top of the ecological pyramid to breed (confirmation of nesting, etc.)	<ol style="list-style-type: none"> Expert survey confirms breeding use (e.g., foraging) by two pairs of gray-faced buzzard in the Shiroyama and forest area owned by Mashiki-cho Expert surveys regularly confirm male and female adult and young mountain hawk-eagles are breeding on the project site
Water Saving	Reduce water consumption rate (m ³ /kl) by 35% less than the rate in 2015 by 2030 (Group-wide target)	Reduced the water consumption rate by approximately 25.2% less than the rate in 2015
Waste water management	Comply with waste water quality standard values	We were able to keep water quality levels within the standard range
Increase local residents' willingness to participate and awareness of activities	Secure participants for "Mizuiku - Education Program for Nature and Water" activities and increase awareness of activities	<ol style="list-style-type: none"> Outdoor School of Forest and Water: 50 participants in 6 sessions Teaching Program at Schools: 283 participants in 3 schools
Environmental conservation activities by employees in the spring area	Preserve the environment in the spring area near the plant through employees' own efforts and communication with local residents	Employees picked up trash and cleaned up at Ukishima Spring Park
Supplier Engagement	Raise awareness of sustainability activities among domestic raw material and packaging suppliers in Japan	Conducted supplier meetings

Collaborative efforts to address shared challenges related to water (AWS standards 5.4)

Shared challenges related to water	Related efforts	Actions to address the issue	Stakeholder engagement	Disclosure methods
Depletion of groundwater and freshwater resources	<ul style="list-style-type: none"> Monitoring of pumped water volume by Kumamoto Prefecture 	<ul style="list-style-type: none"> Management of pumped water volume 	<ul style="list-style-type: none"> Provision of information on pumped water volume to local government (Kumamoto Prefecture and Kashima-cho) 	<ul style="list-style-type: none"> Kumamoto Prefecture Website "Mizu no Kuni Kumamoto" (http://mizukuni.pref.kumamoto.jp/Default.aspx) Suntory site report
Wastewater-based water pollution of Amamizu River	<ul style="list-style-type: none"> Water quality monitoring by the Department of Environmental Living, Kumamoto Prefecture 	<ul style="list-style-type: none"> Regulation of waste water quality (pH, BOD, SS, coliform group) based on regulations and agreements 	<ul style="list-style-type: none"> Work with local government (health care center) 	<ul style="list-style-type: none"> Homepage of the Environment Department, Environment Bureau, Environment and Life Department, Kumamoto Prefecture(http://www.pref.kumamoto.jp/soshiki/51/143083.html) Suntory site report