

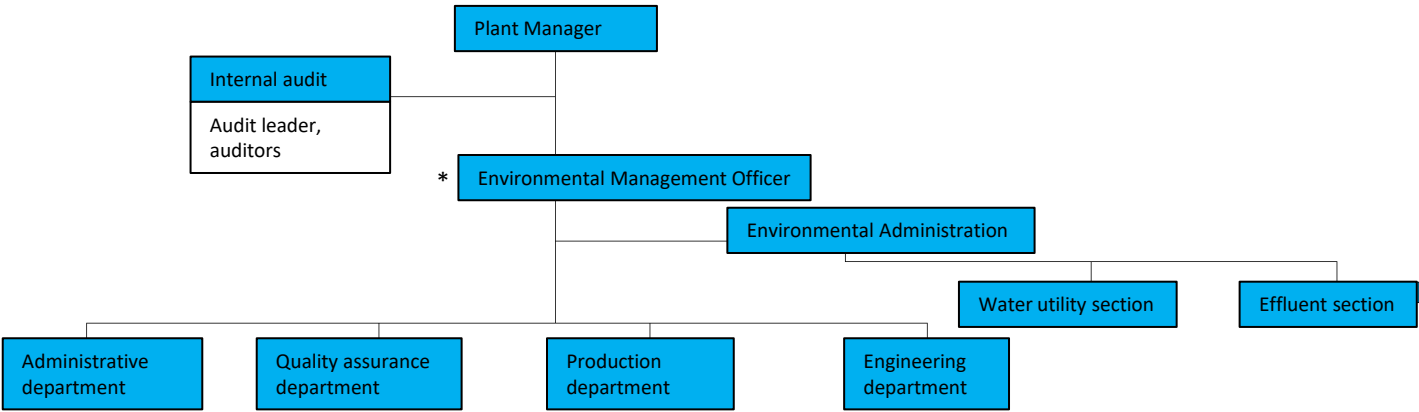
Water Activity Report 2024

Kita Alps Shinanonomori Water Plant, Suntory Products Limited

Address	8071 – 1, Tokiwa, Omachi-shi, Nagano 398-0004 Japan
Business activities	Beverage manufacturing



Internal Governance (AWS Standard:5.1)



*The environmental management officer is responsible for compliance with water-related regulations

Summary of water related activities

Water challenges※ AWS standard 1.6	Target AWS standard 2.3	Performance target AWS standard 2.3	Activities/Performance of 2024 AWS standard 3.5/3.9/5.3	To engage stakeholders AWS standard 5.4
Depletion of groundwater and freshwater resources	Natural Water Sanctuary Kita Alps as an important water related area, maintain and improve groundwater recharge functions and conserve and enhance biodiversity	<p>1. Natural Water Sanctuary (Alps Azumino National Government Park and plant area)</p> <ul style="list-style-type: none"> - Development for the enhancement of water source recharge functions - Conservation of forest ecosystems <p>2. Natural Water Sanctuary (Omachi municipal forest)</p> <ul style="list-style-type: none"> - Development for the enhancement of water source recharge functions - Creating diverse forest environments to serve as habitats for various wildlife species - Effective utilization of timber resource 	<p>1. Natural Water Sanctuary (Alps Azumino National Government Park and plant area)</p> <ul style="list-style-type: none"> - Annual post-planting monitoring in the planned area - Triannual monitoring of raptor nesting activities <p>These efforts help establish a foundation for forest development and conservation</p> <p>2. Natural Water Sanctuary (Omachi municipal forest)</p> <ul style="list-style-type: none"> - Maintaining the developed environment - Quarterly monitoring of pilot experiments by zoning category - Planned utilization of timber in facilities within Omachi City (e.g., benches in sports parks and wooden decks at nursery schools) <p>These initiatives contributed to development, environmental improvement, and resource utilization.</p>	Annual reports on activities under the Natural Water Sanctuary Kita Alps initiative are submitted to Nagano Prefecture, Omachi City, and the MLIT Kanto Bureau's Nagano Highway Office
Depletion of groundwater and freshwater resources	Increase the willingness of watershed communities to participate and recognize activities.	Secure participants for "Mizuiku – education program for nature and water" activities and increase awareness of these activities.	The "Outdoor School of Forest and Water" program has been held 12 times with 360 participants, and the "Education Program as Schools" have been conducted at 6 schools with 340 participants, successfully securing participants and raising awareness.	—
Depletion of groundwater and freshwater resources	Continuously reduce water consumption	Reduce water consumption rate by 35% less (base year in 2015. Group target)	2024 result : improved by 28% compared with 2023, reducing water consumption by a reliable operation of variable water pumping control	Notification of Commercial Well Installation – Omachi City
Water pollution of rivers due to effluent	Maintain appropriate effluent quality to be returned to the community.	Continuously meet the effluent regulation (standard) values specified in the "Nagano effluent regulations."	With zero incidents of reliability degradation and 100% compliance with wastewater standards, the quality of discharged water is being properly maintained.	Water quality regulations for wastewater based on laws and agreements
Water pollution of groundwater / fresh water	To enable prompt implementation of actions defined in the risk regulations, methods for collecting information must be clearly established for the early detection of pollution in surrounding areas, prevention of its impact on factory water usage, and minimization of such impact.	Conduct investigations based on the "Guidelines for Information Gathering Activities Regarding Suspected Soil and Water Pollution (Potential Impact from Surrounding Areas)"	Collection of pollution risk information: conducted annually No notable risks detected	—
Ensuring safe water and sanitation environments	Ensure the supply of safe potable water and the availability of hygienic sanitation infrastructure	<p>1. Adequate access to safe drinking water for all workers onsite.</p> <p>2. Adequate access to effective sanitation, and protective hygiene for all workers onsite.</p>	1. and 2.: proper maintenance is being ensured through annual inspections of domestic water tanks and annual testing of tap water quality	<ul style="list-style-type: none"> - "Sanitary Measures Guidelines for Drinking Wells and Related Facilities" - "Rules for Office Operations" - "Industrial Safety and Health Regulations"
Protection of catchments with ecological and cultural value / Conservation and enhancement of biodiversity	Conservation of natural environments within the national park and the development of suitable habitats for raptor nesting, accompanied by information dissemination regarding these initiatives.	Contributing to the conservation of nature in Alps Azumino National Government Park by continuing efforts in forest preservation, ecosystem protection, and environmental education within the park's conservation zone.	<p>Contributing to the conservation of the park's natural environment through the following activities:</p> <ul style="list-style-type: none"> - In the short term, clearing undergrowth around potential nesting trees - In the long term, renewing red pine forests through small-scale clear-cutting and reforestation - Promoting awareness of these efforts via the Natural Water Sanctuary website and various media channels 	Under the 'Natural Water Sanctuary – Kita Alps' agreement, annual activity reports are submitted to Nagano Prefecture, Omachi City, and the Nagano National Highway Office of the MLIT Kanto Regional Development Bureau
Protection of catchments with ecological and cultural value	Contribution to cultural value	Making contributions by consistently maintaining and improving the environment surrounding Hachioji Shrine	New Year's visit conducted in 2024. (Annual surrounding area cleanup planned for 2025 — once per year, with a 100% implementation rate. To be continued thereafter.)	—
Strengthening water governance through collaboration with the community	Promoting initiatives for the proper utilization of groundwater through collaboration among industry, government, and academia.	<ul style="list-style-type: none"> - Maintain ongoing involvement in the Shinano Omachi Mizunowa Project. - Sustain the establishment and management of the Omachi City Water and Groundwater Environmental Conservation Council. 	<ul style="list-style-type: none"> - Initiated the development of collaborative products with water as the central theme. - Advanced preparations for the establishment of a council, beginning with a proposal submitted to Omachi City in August 2024. <p>A foundation for the council was formed through consensus among industry, government, and academia. (The inaugural general meeting was held in May 2025.)</p>	<ul style="list-style-type: none"> - Shinano Omachi Mizunowa Project - Omachi City Council for the Conservation of Water and Groundwater Environments
Strengthening water governance through collaboration with the community	Establishing a collaborative framework through communication with key stakeholders involved in nearby catchments	Maintain the ongoing activities of the Liaison Council for the Suntory Shinano-no-Mori Plant	The council meeting was held in July 2024. No requests or concerns related to water issues were raised.	the Liaison Council for the Suntory Shinano-no-Mori Plant

*After careful consideration, there are no shared water challenges currently faced. However, there are concerns about the depletion of groundwater and freshwater resources, as well as water pollution in rivers caused by wastewater

Water balance (Period : January 1 - December 31, 2024)

[Input]

Type	Unit	Amount of consumption
Water to use (Pumping・Purchasing)	Thousand m ³	493

[Output]				
Type			Unit	Amount of consumption
Effluent (Public waters discharge)	Amount of water		Thousand m ³	268
	pH	Regulation	—	5.8~8.6
		Voluntary standards	—	6.0~8.4
		Actual measurement	—	7.4
		Measured average	—	7.7
	BOD	Regulation	mg/ℓ	20以下
		Voluntary standards	mg/ℓ	16以下
		Actual measurement	mg/ℓ	1.3
		Measured average	mg/ℓ	0.8