

Suntory Group

Corporate Overview Fact Sheet

2020

Corporate Overview / Products and Services / Business Highlight



Corporate Overview

Suntory Group

Group companies: 300 (as of December 31, 2019)

Employees: 40,210 (as of December 31, 2019)

Consolidated Revenue: ¥2,294.7 billion (January 1 to December 31, 2019)
(excluding excise taxes)

Consolidated Revenue: ¥2,569.2 billion (January 1 to December 31, 2019)
(including excise taxes)

Consolidated Operating Income: ¥259.6 billion (January 1 to December 31, 2019)

Suntory Holdings Limited

Head Office: 2-1-40 Dojimahama, Kita-ku, Osaka City, Osaka, Japan

Suntory World Headquarters: 2-3-3 Daiba, Minato-ku, Tokyo, Japan

Inauguration of business: 1899

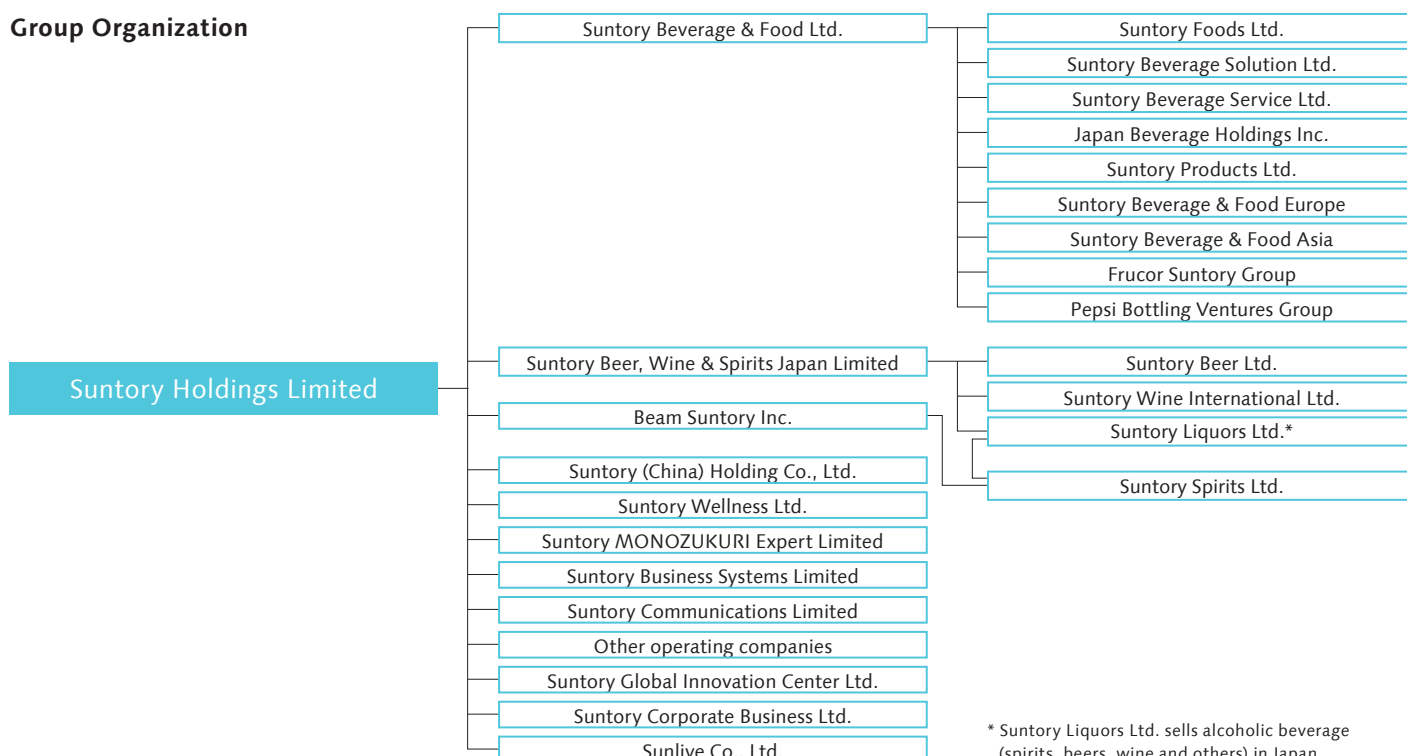
Establishment: February 16, 2009

Chairman of the Board & Chief Executive Officer: Nobutada Saji

Representative Director,
President & Chief Executive Officer: Takeshi Niinami

Capital: ¥70 billion

Group Organization



* Suntory Liquors Ltd. sells alcoholic beverage (spirits, beers, wine and others) in Japan.

SUNTORY



Products and Services

Non-alcoholic Beverage and Food Business/Alcoholic Beverage Business

Non-alcoholic Beverage and Food Business

We deliver a wide range of products including mineral water, coffee, tea, carbonated drinks, sports drinks and health foods. We manufacture and sell these non-alcoholic beverages and foods globally, such as in Japan, Europe, Asia, Oceania, and North America, etc.



Group Companies

Suntory Beverage & Food Ltd.

Japan

Suntory Foods Ltd.
Suntory Beverage Solution Ltd.
Suntory Beverage Service Ltd.
Japan Beverage Holdings Inc.
Suntory Products Ltd.

Europe

Orangina Schweppes Holding B.V.
Lucozade Ribena Suntory Limited

Asia

Suntory Beverage & Food Asia Pte. Ltd.
BRAND'S SUNTORY INTERNATIONAL CO., LTD.
PT SUNTORY GARUDA BEVERAGE
Suntory PepsiCo Vietnam Beverage Co., Ltd.
Suntory PepsiCo Beverage (Thailand) Co., Ltd.

Oceania

FRUCOR SUNTORY NEW ZEALAND LIMITED
FRUCOR SUNTORY AUSTRALIA PTY. LIMITED

Americas

Pepsi Bottling Ventures LLC

Alcoholic Beverage Business

We are aiming for further growth through ceaseless challenges since our founding in the production and sales of wine in 1899, including the creation of Japan's first authentic whisky and expansion into beer brewing business. We deliver various products around the world as a comprehensive alcohol beverage company.



Group Companies

Beam Suntory Inc.

Suntory Spirits Ltd.

Suntory Allied Ltd.
SUNTORY CHITA DISTILLERY LIMITED
Osumisyuzo Ltd.

Suntory Beer, Wine & Spirits Japan Limited

Suntory Beer Ltd.

Suntory Liquors Ltd.

Okinawa Suntory Ltd.

Suntory Wine International Ltd.

Fwines Co., Ltd.
Iwanohara Vineyard Co., Ltd.
ASC Fine Wines Holding Ltd.
Château Lagrange S.A.S.
Grands Millésimes de France S.A.S.(GMdF)
Château Beychevelle
Château Beaumont
Barrière Frères S.A.S
Weingut Robert Weil

SUNTORY



Products and Services

Health Foods, Restaurants, Flowers, Services and Others/Cross-functional Companies/ Arts, Culture, Academic Foundations and Social Welfare Organization

Health Foods, Restaurants, Flowers, Services and Others

We are involved in various kinds of business, such as the manufacture and sales of ice creams, restaurant businesses in Japan and overseas. Moreover, we also engage in development of variety of products which are based on our polyphenol research and biotechnology, environmental greening businesses in China, and reception services in cultural facilities.



Group Companies

- DYNAC HOLDINGS CORPORATION**
- Pronto Corp.
- Izutsu Maisen Co., Ltd.
- Restaurant Suntory Mexico Group
- Suntory F&B International Group
- Suntory Flowers Ltd.
- TOYOTA SUNTORY MIDORIE (SHANGHAI) Co., Ltd.**
- Suntory Marketing & Commerce Ltd.
- Suntory Publicity Service Ltd.
- Suntory Investment and Development Ltd.
- Sun-Ad Co., Ltd.
- Suntory Wellness Ltd.**
- Suntory Wellness Taiwan Ltd.
- Connecto Co., Ltd.
- Häagen-Dazs Japan, Inc.**
- Monte Bussan K.K
- Suntory (China) Holding Co., Ltd.**
- Suntory Huiyuan (Shanghai) Beverage Co., Ltd.

Cross-functional Companies

We aggregate common operations of the Group companies and establish cross-functional companies that take charge of an array of responsibilities from quality assurance, technological development, procurement and logistics, advertising and design to customer relations, business systems, fundamental research, and sales support.

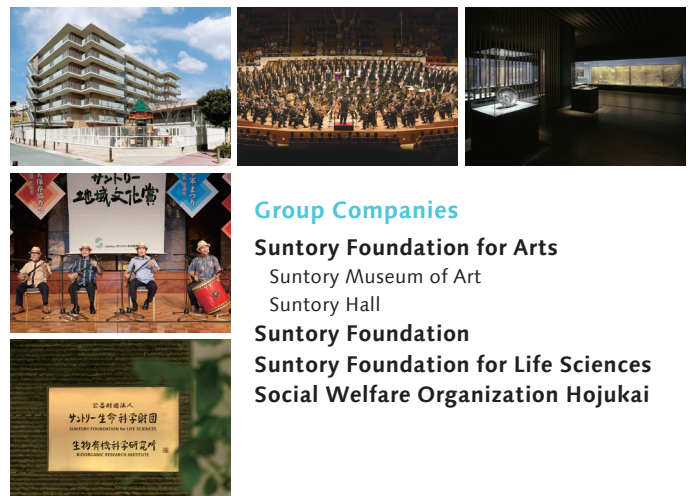


Group Companies

- Suntory MONOZUKURI Expert Limited**
- Suntory China Quality Assurance Center
- Suntory Coffee Roastery LTD.
- Suntory Malting LTD.
- Suntory Trading Hong Kong LTD.
- SUNTORY LOGISTICS LIMITED**
- Suntory Business Systems Limited**
- Suntory System Technology Limited
- SUNTORY BUSINESS SYSTEMS ASIA PTE. LTD.**
- Suntory Communications Limited**
- Suntory Global Innovation Center Ltd.**
- Suntory Corporate Business Ltd.**
- Sunlive Co., Ltd.**

Arts, Culture, Academic Foundations and Social Welfare Organization

We are actively engaged in cultural and social contribution activities through three foundations that support academics, arts, and local culture as well as a social welfare organization that operate elderly care facilities and child daycare centers.



Group Companies

- Suntory Foundation for Arts**
- Suntory Museum of Art
- Suntory Hall
- Suntory Foundation**
- Suntory Foundation for Life Sciences**
- Social Welfare Organization Hojukai**

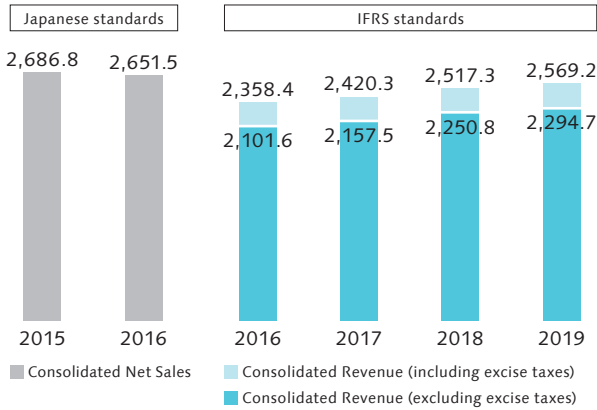


Business Highlight

The Suntory Group adopted IFRS for the fiscal year ended December 31, 2017.

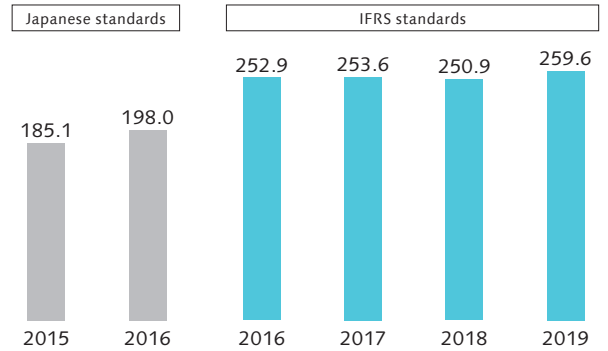
Consolidated Revenue

(Billion of yen)



Consolidated Operating Income

(Billion of yen)



Sales by Business Segment

Others

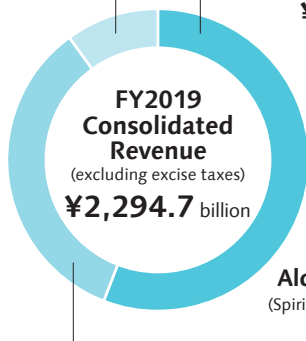
(Health food, ice cream, restaurants, flowers, operations in China and other operations)

¥229.6 billion (10%)

Beverage and Food

(Non-alcoholic beverages, health drinks, processed food, other products)

¥1,291.7 billion (56%)



Alcoholic Beverage

(Spirits, beer, wine and other alcoholic beverages)

¥773.4 billion (34%)

Sales by Area

Asia, Oceania

¥363.5 billion (16%)

Europe

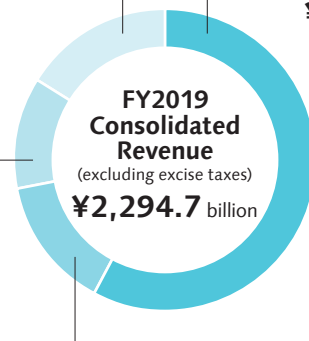
¥288.8 billion (12%)

Americas

¥312.7 billion (14%)

Japan

¥1,329.7 billion (58%)



Number of Group Companies/Employees by Region

